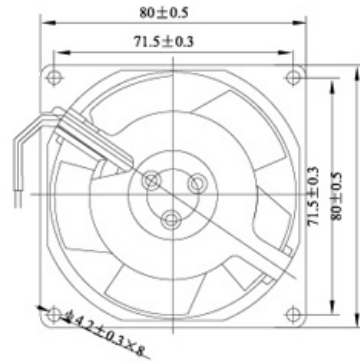
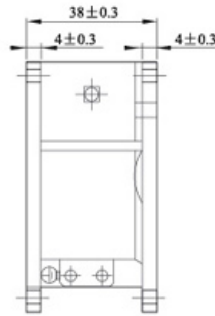


80×80×38mm



Motor Structure	Shaded pole motor.
Safety	Impedance Protected
Operation System	Dual high Precision ball bearings. (single sleeve bearing)
Allowable Ambient Temperature Range	(under unconcretionary condition) -20°C~+65°C(ball bearing) , -10°C~+45°C.(Sleeve bearing)
Insulation	B Class
Protection Grade	IP34

Type	F2E-80S/B-230	F2E-80S/B-115
Bearing	Sleeve/Ball	Sleeve/Ball
Voltage(V)	220/230	110/115
Frequency(Hz)	50/60	50/60
Current(A)	0.06/0.07	0.13/0.15
Power(w)	15/12	15/12
Speed(RPM)	2600/3000	2600/3000
Wind volume	45/55	45/55
Noise dB(A)	29/35	29/35
Weight(g)	335g	335g

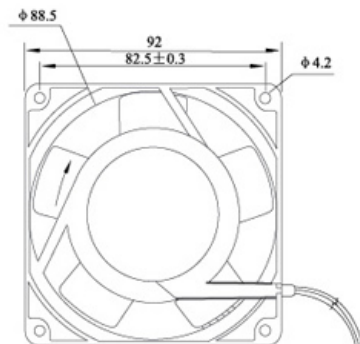


92×92×25mm



Motor Structure	Shaded pole motor.
Safety	Impedance Protected
Operation System	Dual high Precision ball bearings. (single sleeve bearing)
Allowable Ambient Temperature Range	(under unconcretionary condition) -20°C~+65°C(ball bearing) , -10°C~+45°C.(Sleeve bearing)
Insulation	B Class
Protection Grade	IP34

Type	F2E-92S/B-230	F2E-92S/B-115
Bearing	Sleeve/Ball	Sleeve/Ball
Voltage(V)	220/230	110/115
Frequency(Hz)	50/60	50/60
Current(A)	0.07/0.08	0.12/0.14
Power(w)	13.2/15.4	13.2/15.4
Speed(RPM)	2200/2600	2200/2600
Wind volume	60/68	60/68
Noise dB(A)	29/35	29/35
Weight(g)	255g	255g

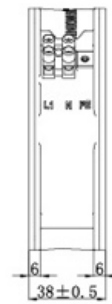
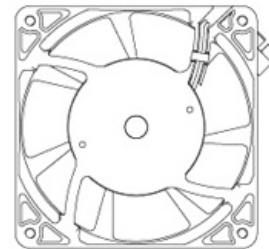
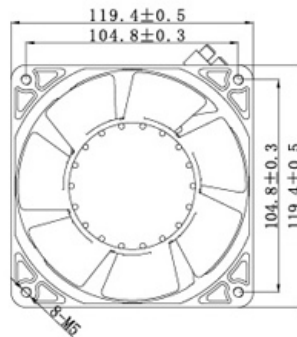


120×120×38mm



Motor Structure	Shaded pole motor.
Safety	Impedance Protected
Operation System	Dual high Precision ball bearings. (single sleeve bearing)
Allowable Ambient Temperature Range	(under unconcretionary condition) -20°C~+65°C(ball bearing) , -10°C~+45°C.(Sleeve bearing)
Insulation	B Class
Protection Grade	IP34

Type	F2E-120S/B-230	F2E-120S/B-115
Bearing	Sleeve/Ball	Sleeve/Ball
Voltage(V)	220/230	110/115
Frequency(Hz)	50/60	50/60
Current(A)	0.12/0.10	0.24/0.20
Power(w)	19/14	18/15
Speed(RPM)	2500/2700	2500/2800
Wind volume	145/160m ³ /h	145/170m ³ /h
Noise dB(A)	34/37	34/37
Weight(g)	530g	510g

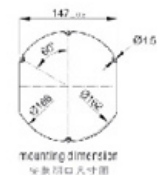
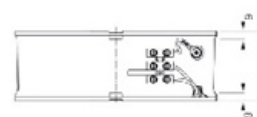
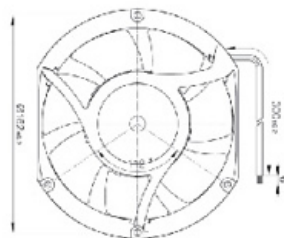
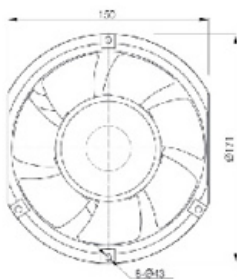


Φ150×51mm



Motor Structure	Shaded pole motor.
Safety	Impedance Protected
Operation System	Dual high Precision ball bearings. (single sleeve bearing)
Allowable Ambient Temperature Range	(under unconcretionary condition) -20°C~+65°C(ball bearing) , -10°C~+45°C.(Sleeve bearing)
Insulation	B Class
Protection Grade	IP34

Type	F2E-150S/B-230	F2E-150S/B-115
Bearing	Sleeve/Ball	Sleeve/Ball
Voltage(V)	220/230	110/115
Frequency(Hz)	50/60	50/60
Current(A)	0.19/0.17	0.48/0.46
Power(w)	38/36	41/38
Speed(RPM)	2500/2800	2500/2800
Wind volume	402/460m ³ /h	402/460m ³ /h
Noise dB(A)	50	50
Weight(g)	900g	880g

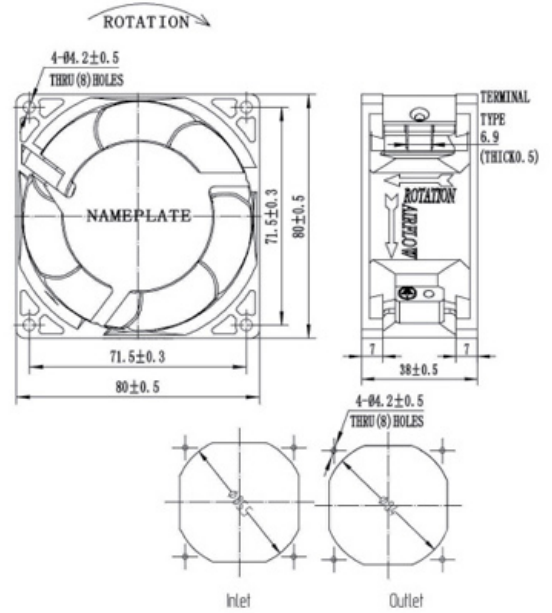


80×80×38mm



Metal Blades

Size	80x80x38mm
Airflow	42-54m ³ /hr 25-33CFM
Weight	403g
Noise	28-36dBA
Impeller	Metal
Frame	Aluminum Alloy
Terminals	0.5mm
Lead Wire	Teflon 22#UL 1332(Optional)
Motor	Shaded Pole And External Rotor Induction Motor
Operating Temperature	-10°C~+105°C



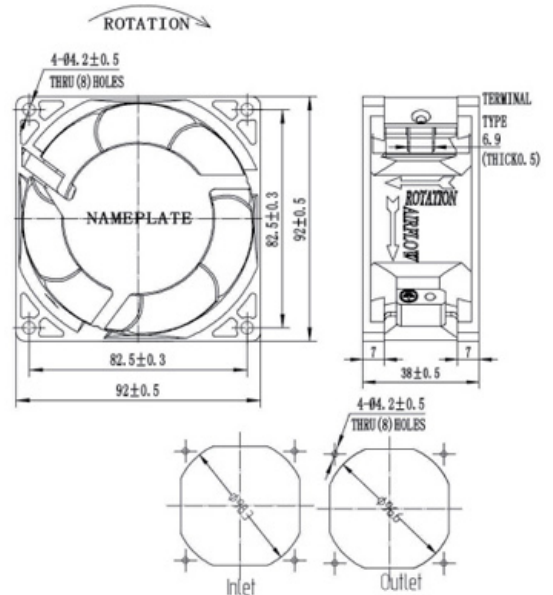
Model	Bearing System	Voltage VAC	Freq. Hz	Current A	Power W	Speed RPM	Noise dBA	Air Flow		Phase	Capacitor
								M ³ /hr	CFM		
FL8038HA ₁ B-7P	Ball	100/125	50/60	0.18	17/14	2700/3100	30/36	44/54	28/33	1	/
FL8038HA ₂ B-7P		200/240	50/60	0.1	17/14	2700/3100	30/36	44/54	28/33	1	/
FL8038MA ₁ B-7P		100/125	50/60	0.12	11	2300/2700	28/30	42/49	25/29	1	/
FL8038MA ₂ B-7P		200/240	50/60	0.07	11	2300/2700	28/30	42/49	25/29	1	/

92×92×25mm



Metal Blades

Size	92x92x38mm
Airflow	71-91m ³ /hr 42-54CFM
Weight	480g
Noise	35-40dBA
Impeller	Metal
Frame	Aluminum Alloy
Terminals	0.5mm
Lead Wire	Teflon 22#UL 1332(Optional)
Motor	Shaded Pole And External Rotor Induction Motor
Operating Temperature	-10°C~+105°C



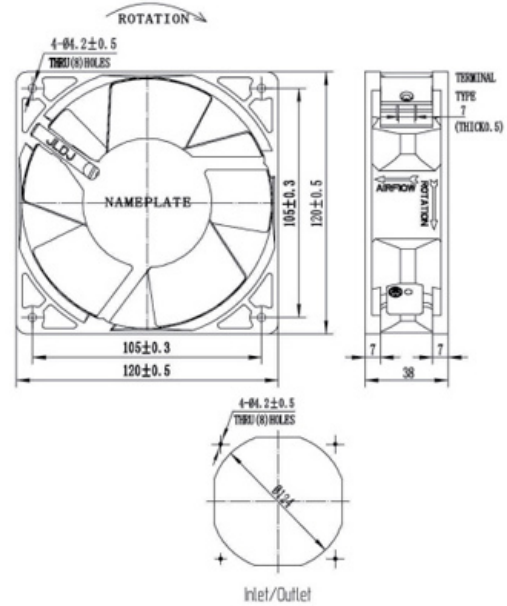
Model	Bearing System	Voltage VAC	Freq. Hz	Current A	Power W	Speed RPM	Noise dBA	Air Flow		Phase	Capacitor
								M ³ /hr	CFM		
FL9238HA ₁ B-7P	Ball	100/125	50/60	0.18	17/14	2600/3000	38/40	78/91	46/54	1	/
FL9238HA ₂ B-7P		200/240	50/60	0.1	17/14	2600/3000	38/40	78/91	46/54	1	/
FL9238MA ₁ B-7P		100/125	50/60	0.12	11	2300/2700	35/40	71/85	42/50	1	/
FL9238MA ₂ B-7P		200/240	50/60	0.07	11	2300/2700	35/40	71/85	42/50	1	/

120x120x38mm



Metal Blades

Size	120x120x38mm
Airflow	134-204m ³ /hr 79-120CFM
Weight	600g
Noise	39-50dBA
Impeller	Metal
Frame	Aluminum Alloy
Terminals	0.5mm
Lead Wire	Teflon 22#UL 1332(Optional)
Motor	Shaded Pole And External Rotor Induction Motor
Operating Temperature	-10°C~+105°C



Model	Bearing System	Voltage VAC	Freq. Hz	Current A	Power W	Speed RPM	Noise dBA	Air Flow		Phase	Capacitor
								M ³ /hr	CFM		
FL12038HA ₁ B	Ball	100/125	50/60	0.21	21	2600/3000	46/50	180/204	106/120	1	/
FL12038HA ₂ B		200/240	50/60	0.11	19	2600/3000	46/50	180/204	106/120	1	/
FL12038MA ₁ B		100/125	50/60	0.21	17	2000/2200	39/41	134/149	79/87	1	/
FL12038MA ₂ B		200/240	50/60	0.10	16	2000/2200	39/41	134/149	79/87	1	/

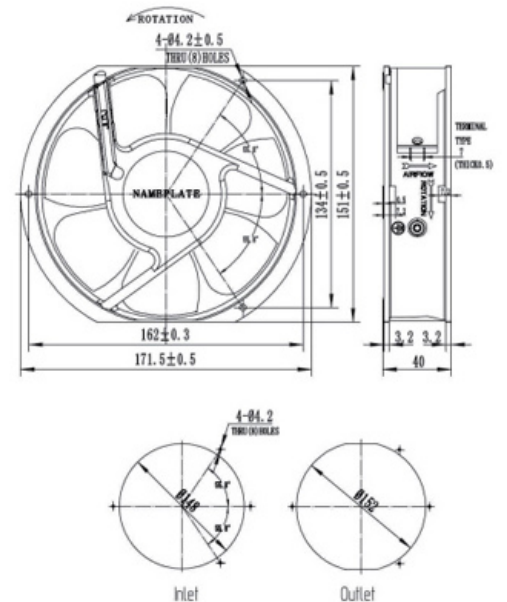
Multiplane fan

172x150x38mm



Metal Blades

Size	172x150x38mm
Airflow	348-390m ³ /hr 205-230CFM
Weight	860g
Noise	56-59dBA
Impeller	Metal
Frame	Aluminum Alloy
Terminals	0.5mm
Lead Wire	Teflon 22#UL 1332(Optional)
Motor	Capacitor-Run And External Rotor Induction Motor
Operating Temperature	-10°C~+105°C



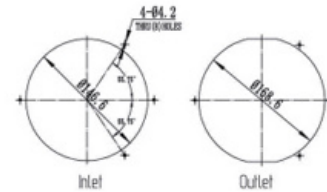
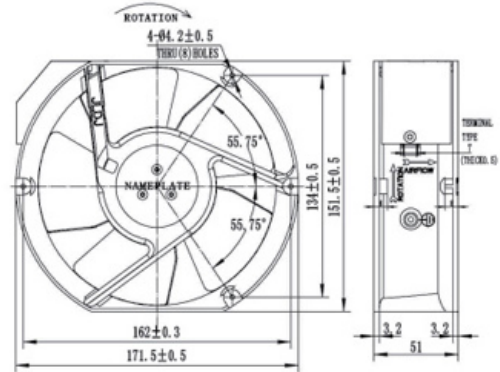
Model	Bearing System	Voltage VAC	Freq. Hz	Current A	Power W	Speed RPM	Noise dBA	Air Flow		Phase	Capacitor
								M ³ /hr	CFM		
FL17040HA ₁ B	Ball	100/125	50/60	0.2/0.2	24/24	2700/3200	56/59	348/390	205/230	1	3.3uf/250v
FL17040HA ₂ B		200/240	50/60	0.1/0.1	24/24	2700/3200	56/59	348/390	205/230	1	1uf/630v

172x150x51mm



Metal Blades

Size	172x150x51mm
Airflow	210-390m ³ /hr 205-230CFM
Weight	900g
Noise	56-59dBA
Impeller	Metal
Frame	Aluminum Alloy
Terminals	0.5mm
Lead Wire	Teflon 22#UL 1332(Optional)
Motor	Capacitor-Run And External Rotor Induction Motor
Operating Temperature	-10°C~+105°C



Model	Bearing System	Voltage VAC	Freq. Hz	Current A	Power W	Speed RPM	Noise dBA	Air Flow		Phase	Capacitor
								M ³ /hr	CFM		
FL17050HA ₁ B	Ball	100/125	50/60	0.38/0.34	37/35	2700/3200	54/57	357/419	210/247	1	3.3uf/250v
FL17050HA ₂ B		200/240	50/60	0.13/0.15	29/33	2700/3200	54/57	357/419	210/247	1	1uf/630v

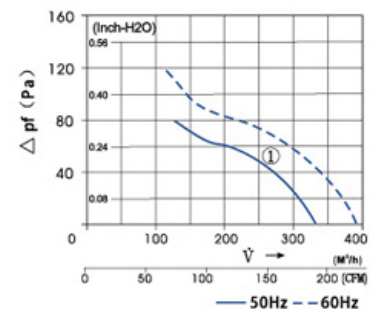
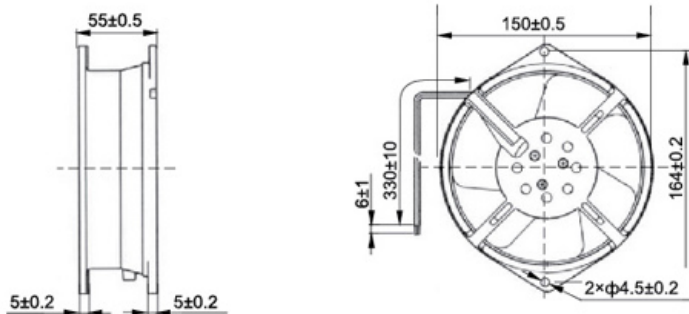
172x162x51mm



Metal Blades

Motor Structure	Cage type structure motor.
Safety	Impedance Protected
Operation System	Dual high Precision ball bearings. (single sleeve bearing)
Allowable Ambient Temperature Range	(under unconcretionary condition) -20°C~+65°C(ball bearing) , -10°C~+45°C.(Sleeve bearing)
Insulation	B Class
Protection Grade	IP34

Type	F2E-162B-230	F2E-162B-115
Bearing	Ball	Ball
Voltage(V)	220/230	110/115
Frequency(Hz)	50/60	50/60
Current(A)	0.20/0.26	0.42/0.51
Power(w)	53/43	40/35
Speed(RPM)	2700/3000	2700/3000
Wind volume	325/380	325/380
Noise dB(A)	48/52	48/52
Weight(g)	1100g	1100g

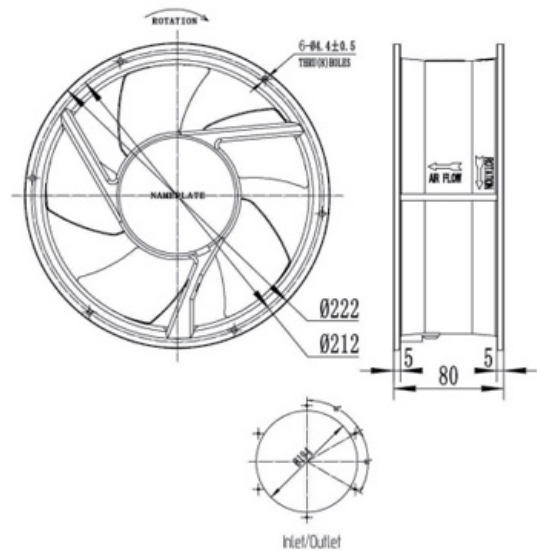


Φ220×80mm



Metal Blades

Size	Φ220x80mm
Airflow	849-925m ³ /hr 500-545CFM
Weight	2000g
Noise	59-61dBA
Impeller	Metal
Frame	Aluminum Alloy
Terminals	0.5mm
Lead Wire	Teflon 22#UL 1332(Optional)
Motor	Capacitor-Run And External Rotor Induction Motor
Operating Temperature	-10°C~+105°C



Model	Bearing System	Voltage VAC	Freq. Hz	Current A	Power W	Speed RPM	Noise dBA	Air Flow		Phase	Capacitor
								M ³ /hr	CFM		
FL22080HA ₁ B-C	Ball	100/125	50/60	0.58/0.65	67/77	2600/2800	59/61	849/925	500/545	1	4.0uf/250v
FL22080HA ₂ B-C		200/240	50/60	0.28/0.35	62/80	2600/2800	59/61	849/925	500/545	1	2uf/630v
FL22080HA ₃ B		380/420	50/60	0.25	65	2600/2800	59/61	849/925	500/545	3	/
FL22080HA ₆ B-C		380/420	50/60	0.25	65	2600/2800	59/61	849/925	500/545	1	1uf/630v

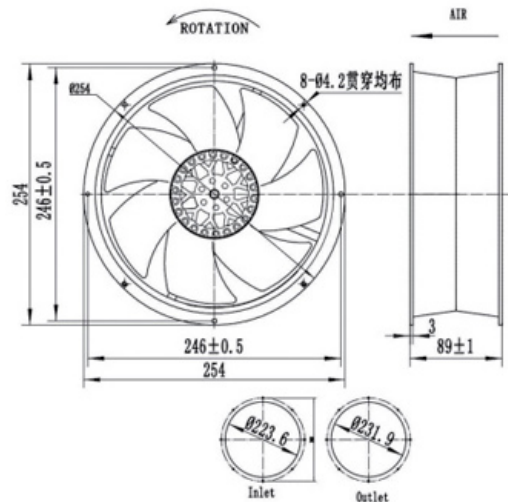
Multiplane fan

Φ254×89mm



Metal Blades

Size	Φ254x89mm
Airflow	1392-1528m ³ /hr 800-900CFM
Weight	2600g
Noise	59-61dBA
Impeller	Metal
Frame	Aluminum Alloy
Terminals	0.5mm
Lead Wire	Teflon 22#UL 1332(Optional)
Motor	Capacitor-Run And External Rotor Induction Motor
Operating Temperature	-10°C~+105°C



Model	Bearing System	Voltage VAC	Freq. Hz	Current A	Power W	Speed RPM	Noise dBA	Air Flow		Phase	Capacitor
								M ³ /hr	CFM		
FL25489HA ₁ B-C-7P	Ball	100/125	50/60	0.98/1.15	67/77	2700/3100	59/61	1392/1528	500/545	1	4.0uf/250v
FL25489HA ₂ B-C-7P		200/240	50/60	0.5/0.65	62/80	2700/3100	59/61	1392/1528	500/545	1	2.2uf/400v
FL25489HA ₃ B-7P		380/420	50/60	0.25	65	2700/3100	59/61	1392/1528	500/545	3	/
FL25489HA ₆ B-C-7P		380/420	50/60	0.25	65	2700/3100	59/61	1392/1528	500/545	1	1uf/630v

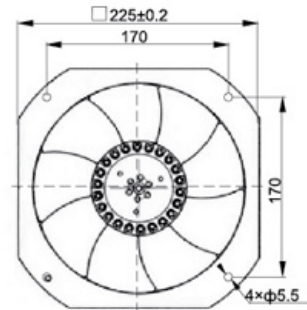
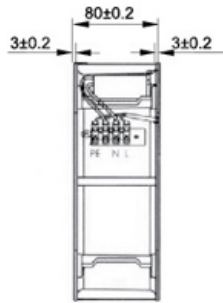
260×225×80mm



Metal Blades

Motor Structure	Cage type structure motor.
Safety	Impedance Protected
Operation System	Dual high Precision ball bearings. (single sleeve bearing)
Allowable Ambient Temperature Range	(under unconcretionary condition) -20°C~+65°C(ball bearing) , -10°C~+45°C.(Sleeve bearing)
Insulation	B Class
Protection Grade	IP34

Type	F2E-260B-230	F2E-260B-115
Bearing	Ball	Ball
Voltage(V)	220/230	110/115
Frequency(Hz)	50/60	50/60
Current(A)	0.34/0.29	0.63/0.61
Power(w)	63/79	61/71
Speed(RPM)	2450/2700	2500/2750
Wind volume	915/1010	925/1030
Noise dB(A)	59/61	59/61
Weight(g)	2200g	2200g



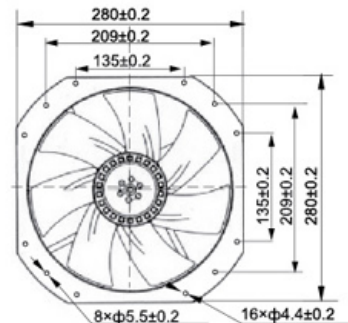
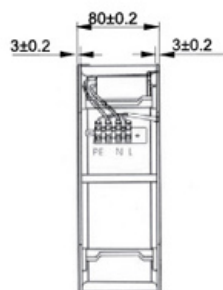
320×280×80mm



Metal Blades

Motor Structure	Cage type structure motor.
Safety	Impedance Protected
Operation System	Dual high Precision ball bearings. (single sleeve bearing)
Allowable Ambient Temperature Range	(under unconcretionary condition) -20°C~+65°C(ball bearing) , -10°C~+45°C.(Sleeve bearing)
Insulation	B Class
Protection Grade	IP34

Type	F2E-320B-230	F2E-320B-115
Bearing	Ball	Ball
Voltage(V)	220/230	110/115
Frequency(Hz)	50/60	50/60
Current(A)	0.46/0.60	0.95/1.20
Power(w)	140/100	140/100
Speed(RPM)	2500/2650	2480/2600
Wind volume	1800/1950	1800/1950
Noise dB(A)	68/70	68/70
Weight(g)	2900g	2900g

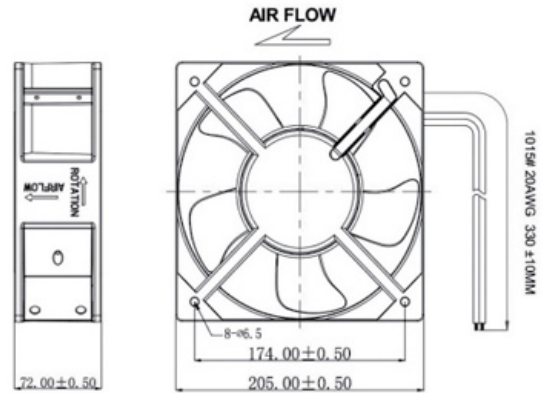


205×205×72mm



Metal Blades

Size	205x205x72mm
Airflow	905-1248m ³ /hr 533-735CFM
Weight	2100g
Noise	61-68dBA
Impeller	Metal
Frame	Aluminum Alloy
Terminals	0.5mm
Lead Wire	Teflon 22#UL 1332(Optional)
Motor	Capacitor-Run Induction Motor
Operating Temperature	-10°C~+65°C



Model	Bearing System	Voltage VAC	Freq. Hz	Current A	Power W	Speed RPM	Noise dBA	Air Flow		Phase	Capacitor
								M ³ /hr	CFM		
FL20572HA ₁ B-C	Ball	100/125	50/60	0.8/0.9	88/98	2850/3250	61/68	905/1248	533/735	1	10uf/250v
FL20572HA ₂ B-C		200/240	50/60	0.35/0.45	68/78	2850/3250	61/68	905/1248	533/735	1	5uf/500v

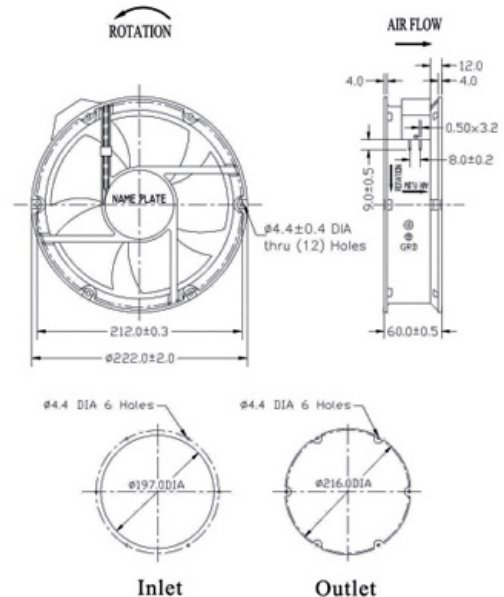
Multiplane fan

Φ 200×60mm



Metal Blades

Size	Φ200x60mm
Airflow	730-824m ³ /hr 430-485CFM
Weight	1250g
Noise	55-67dBA
Impeller	Metal
Frame	Aluminum Alloy
Terminals	0.5mm
Lead Wire	Teflon 22#UL 1332(Optional)
Motor	Capacitor-Run Induction Motor
Operating Temperature	-10°C~+65°C



Model	Bearing System	Voltage VAC	Freq. Hz	Current A	Power W	Speed RPM	Noise dBA	Air Flow		Phase	Capacitor
								M ³ /hr	CFM		
FL22060HA ₁ B-C	Ball	100/125	50/60	0.42/0.46	50/60	2800/3100	55/67	730/824	430/485	1	3.3uf/630v
FL22060HA ₂ B-C		200/240	50/60	0.25/0.26	50/60	2800/3100	55/67	730/824	430/485	1	1.8uf/630v