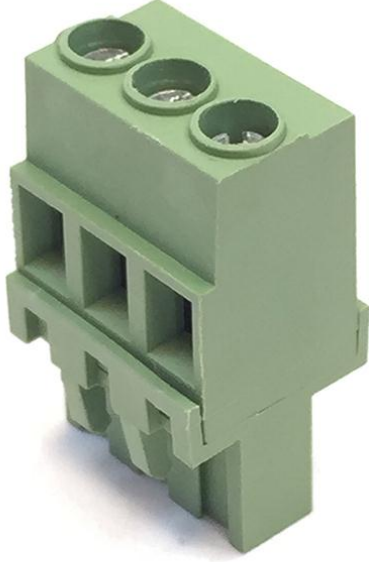


5,08 mm SOCKET TERMINAL SERIES VERTICAL FEMALE



Production Code : 263 SBDK-DD
*Order No: Page 3

5,08 mm



5,08 mm printed circuit terminal is suitable for female conductor cross section of 0,25 -2,5 mm² .

- Pin range : 5,08 mm
- Voltage : 250 V
- Current : 16 A

TECHNICAL DATA

Dimensions

Width	15,18 mm
Height	25,90 mm
Depth	12,60 mm
Pin range	5,08 mm
Pin thickness	-
Pin hole diameter	-

Technical data

Current	16 A
Voltage	250 V
Cable cross section	0,25 – 2,5 mm ²
Screw size	M3
Nominal torque	0,25 Nm
Flammability rating	V0
Coating	µ3+AG

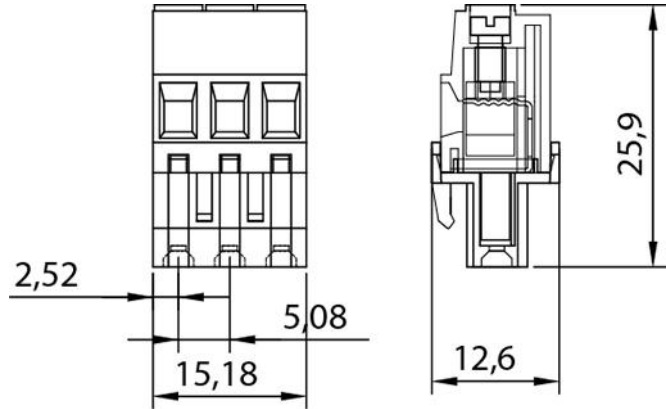
GENERAL ORDERING DATA

Type	5,08 mm Socket Terminal Series Vertical F. Pin 3					
Color	Blue	Green	Orange	Black	Grey	Red
Order No	10.253	11.253	12.253	13.253	14.253	15.253
Qty	100 pcs					
Product data	16 A /250 V / 0,25 – 2,5 mm ² / 5,08 mm					
Package weight	0,63 kg					
Packaging	Box					
Min. Order Qty	100 pcs					
Country of origin	TURKEY					

* Stock color is GREEN.

DRAWINGS/DIAGRAM

Drawings



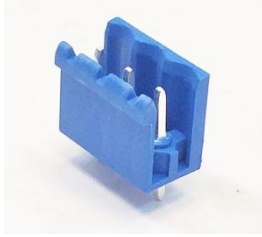
CERTIFICATES

CERTIFICATE	ISSUED BY
TS 10487 EN 60998-2-1	TSE
CE	SZUTEST TECHNICAL INSPECTION AND CERTIFICATION SERVICES CO. LTD.
RoHs	İNTERTEK TEST HİZMETLERİ A.Ş.

COMBINE PRODUCTS

5,08 mm Socket Terminal Series

Male 180° Open - Pin 3



5,08 mm Socket Terminal Series

Male 180° Close - Pin 3

