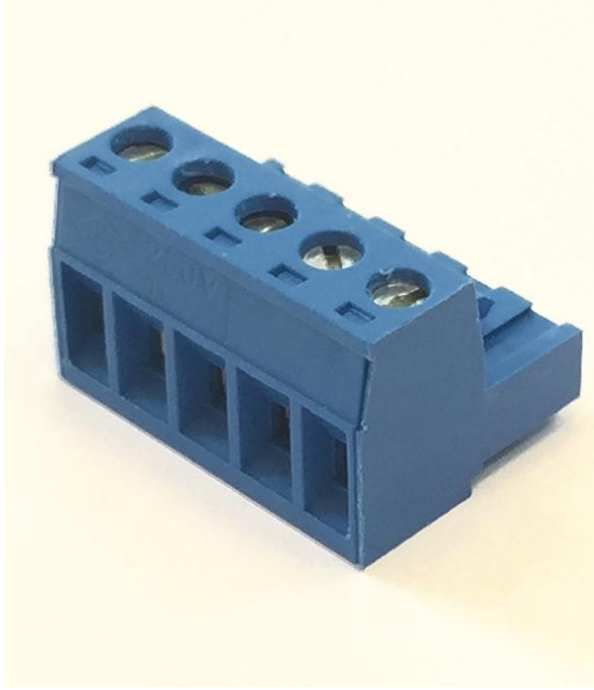


## 5,08 mm SOCKET TERMINAL SERIES FEMALE



Production Code : 205 SBDK-D  
\*Order No: Page 3

**5,08 mm**



5,08 mm printed circuit terminal is suitable for female conductor cross section of 0,25 -2,5 mm<sup>2</sup> .

- Pin range : 5,08 mm
- Voltage : 250 V
- Current : 16 A

## TECHNICAL DATA

### Dimensions

Width	25,28 mm
Height	15,33 mm
Depth	18,15 mm
Pin range	5,08 mm
Pin thickness	-
Pin hole diameter	-

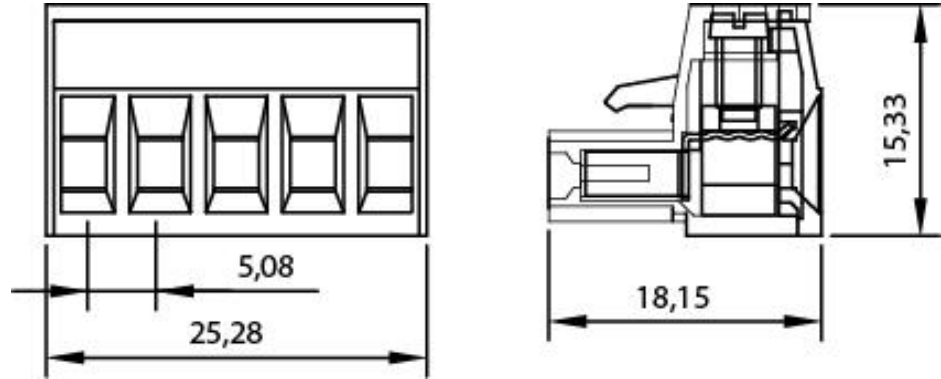
### Technical data

Current	16 A
Voltage	250 V
Cable cross section	0,25 – 2,5 mm <sup>2</sup>
Screw size	M3
Nominal torque	0,25 Nm
Flammability rating	V0
Coating	µ3+AG

**GENERAL ORDERING DATA**

Type	5,08 mm Socket Terminal Series Pin 5					
Color	Blue	Green	Orange	Black	Grey	Red
Order No	10.205	11.205	12.205	13.205	14.205	15.205
Qty	100 pcs					
Product data	16 A /250 V / 0,25 – 2,5 mm <sup>2</sup> / 5,08 mm					
Package weight	0,9 kg					
Packaging	Box					
Min. Order Qty	100 pcs					
Country of origin	TURKEY					

\* Stock color is BLUE and GREEN.

**DRAWINGS/DIAGRAM****Drawings**

## CERTIFICATES

CERTIFICATE	ISSUED BY
TS 10487 EN 60998-2-1	TSE
CE	SZUTEST TECHNICAL INSPECTION AND CERTIFICATION SERVICES CO. LTD.
RoHs	İNTERTEK TEST HİZMETLERİ A.Ş.

## COMBINE PRODUCTS

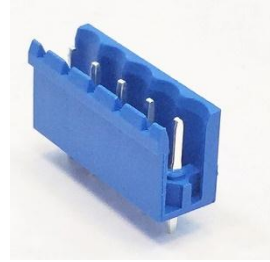
### 5,08 mm Socket Terminal Series

Male 90° Open - Pin 5



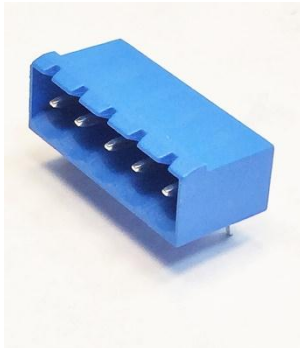
### 5,08 mm Socket Terminal Series

Male 180° Open - Pin 5



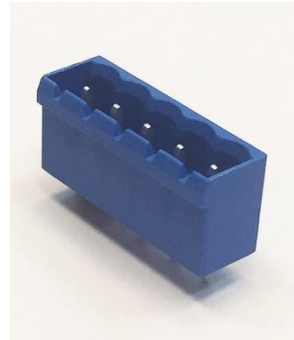
### 5,08 mm Socket Terminal Series

Male 90° Closed- Pin 5



### 5,08 mm Socket Terminal Series

Male 180° Closed - Pin 5



**5,08 mm Socket Terminal Series  
Cable Connector Male - Pin 5**

