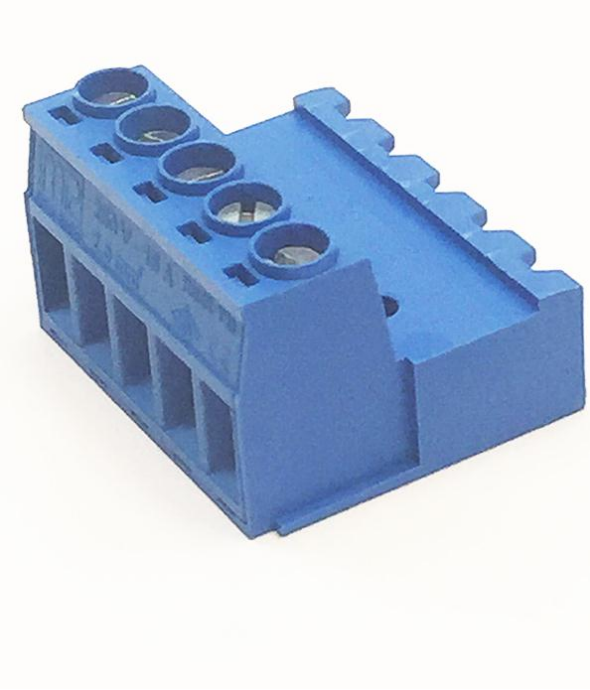


5,08 mm SOCKET TERMINAL SERIES CABLE CONNECTOR MALE



Production Code : 505 SKBK
*Order No: Page 3

5,08 mm



5,08 mm printed circuit terminal is suitable for female conductor cross section of 0,25-2,5 mm².

- Pin range : 5,08 mm
- Voltage : 250 V
- Current : 16 A

TECHNICAL DATA

Dimensions

Width	25,28 mm
Height	15,33 mm
Depth	22,00 mm
Pin range	5,08 mm
Pin thickness	1x1 mm
Pin hole diameter	1,55 mm

Technical data

Current	16 A
Voltage	250 V
Cable cross section	0,25 – 2,5 mm ²
Screw size	M3
Nominal torque	0,2 Nm
Flammability rating	V0
Coating	µ3+AG

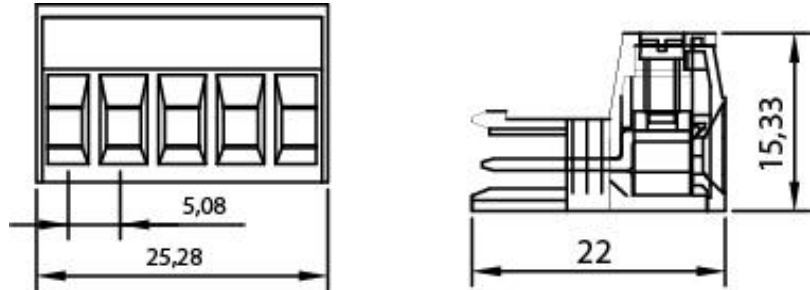
GENEL SİPARİŞ BİLGİLERİ

Type	5,08 mm Socket Terminal Ser. Cable Connector–Pin 5					
Color	Blue	Green	Orange	Black	Grey	Red
Order no	10.605	11.605	12.605	13.605	14.605	15.605
Qty	100 pcs					
Product data	16 A /250 V / 5,08 mm					
Package weight	0,78 kg					
Packaging	Box					
Min. Order Qty	100 pcs					
Country of origin	TURKEY					

* Stock color is GREEN.

DRAWINGS/DIAGRAM

Drawings



CERTIFICATES

CERTIFICATE	ISSUED BY
TS 10487 EN 60998-2-1	TSE
CE	SZUTEST TECHNICAL INSPECTION AND CERTIFICATION SERVICES CO. LTD.
RoHS	İNTERTEK TEST HİZMETLERİ A.Ş.

COMBINE PRODUCTS

5,08 mm Socket Terminal Series Female - Pin 5



5,08 mm Cable Connector Rail Distance

